

DYDDI

DIGEST

DECEMBER - 2025 603



Didmarton's own magazine
Published monthly since 1975

DIARY DATES - November

WOW

2nd International Abolition of Slavery Day.

21st Winter Solstice Shortest day of the year,

24th 25th 26th Cant tell you - its a surprise.

31st New Years Eve.

RUBBISH DATES

All Bins - Friday - 5th & 19th .

Food Waste every Friday except

26th collection which is on

Monday 29th

Film Club

The next Didmarton Film Club showing will be on Friday 12th December

Doors open at 6.30pm for a cash bar and the showing starts at 7.30pm.

Due to licensing restrictions we cannot publicly advertise the Film Title.

Contact Jenny.body1@gmail.com for further details.

All welcome and donations (£5 typically) gratefully received.



100 CLUB

The November 100 Club draw took place on November 5th at the Bonfire Night held at the Village Hall. The prize winners were:

1st prize. £20 Frances Barr

2nd prize. £15 Chris Barski

3rd prize. £15 Ruth Carnaby

4th prize. £10 Jo Spendeler

Sue & Sue

Did You Know? – The Story of Christmas Pudding

Our traditional Christmas pudding began life in the Middle Ages as a savoury stew called frumenty — a mix of beef, mutton, grains, and dried fruit. Over time, sugar and spices replaced the meat, and by Victorian times it had become the rich, fruity pudding we know today.

Families would make it on “Stir-up Sunday,” the last Sunday before Advent, when everyone took a turn to stir the mixture and make a wish. A silver coin was often hidden inside, A lucky find on Christmas Day!



CONTACTS

Phoenix, Tetbury Surgery – 01666 502303
Tolsey Surgery, Sherston – 01666 840270
Tetbury Hospital – 01666 502336

Police – to report incidents – 101

Oldbury Garage – 01454 537016

Dyddi Editor – editor@dyddi.co.uk

Parish Council: John Hammond– 01454 238373

clerk@didmartonparishcouncil.gov.uk *Please note this is a new email address*

Village hall bookings : didhallbookings@gmail.com



BABYSITTING



Amelia Darbyshire – 07702 693100
Charlotte Goodwill - 07485 541461
Esmé Kay 07850 247096
Chloe Wallace 07984 922717
Daisy Nightingale 07816 914434

Please email the editor if you would like
to add your name to the list.

Thank you

Thank you to all the army of volunteers who are on the grass cutting rota for the play area at the playing field. You have done a sterling job all summer keeping it neat and tidy, I am hoping that you will all be happy to keep mowing next year but please let me know if it isn't convenient. If there are any more willing helpers out there who would like to join us please get in touch with me on 01454238285.

Helen Russell



Join us FOR A magical festive evening

OF MUSIC, READINGS & CAROLS

Friday 12th December 2025**7.30pm at St Marys' Church,
Tetbury**

Performers confirmed so far are:

- ◆ Reading by Jason Durr, Actor
- ◆ Alis Huws, Harpist
- ◆ Poem by Mark Cummings, Writer for Cotswold Life
- ◆ Jubilate Chamber Choir, Cheltenham
- ◆ Rose Farquhar
- ◆ Tutti Flutti

Adults: £15 pp to include mulled wine,
mince pies and festive snacks

Children (16 and under): FREE

**Blue
Book.**

Sponsored by

**Visit us at our Christmas Stall
under the Market House, Tetbury**Choose from homemade goodies,
mistletoe, potted hyacinths plus lots more
for sale in aid of your hospital.**Saturday 13th December 2025**

10am – 1pm



Tetbury's Santa Dash!

**Sunday 14th December 2025****A fantastic fun event for all the family!**

11am registration for 11.30am start

Meet and finish at the Market HouseCome along dressed in your favourite festive
attire and choose whether to walk, run, hop,
skip or jump the new extended route around the
town wearing your complimentary Santa hat.

Mince pies and mulled wine on your return.

Entry fee £5 and children under 5 FREE.

Proudly sponsored by

A DIDMARTON CHRISTMAS

As the nights draw in and the last of the leaves flutter across the lawns, Didmarton quietly transforms. The hedgerows are bare, the air sharper, and there's a sense of expectancy. December has arrived — and with it, that gentle hum of Christmas in the countryside.

There's something rather magical about a village Christmas. It's not the grand displays or bustling high streets — we leave those to the towns and cities. Ours is a quieter kind of celebration: fairy lights strung along stone cottages, the faint scent of wood smoke drifting through the lanes, windows decorated with Christmas scenes and perhaps the sound of carol singers along the streets or escaping from behind the church doors.

The pub becomes the beating heart of the season — a place for muddy boots, rosy cheeks, and the happy chaos of dogs underfoot. Old friends reappear, visiting family fill every corner, and someone will inevitably start a conversation about whether mulled wine is better than cider or beer.

Of course, no Didmarton December would be complete without its traditions. There's always that last-minute dash to Tetbury for forgotten gifts, the annual tangle of fairy lights that ***definitely worked last year***, and the familiar village ritual of hoping the weather stays dry just long enough to put up the lights in the trees and round the garden.

But amid the busyness, there's also stillness. A walk through the fields on a crisp morning, a robin on a frosted gatepost, the sound of the church bell carrying over the rooftops. It's a reminder that Christmas, at its heart, isn't about glitter or grandeur, but about connection — to place, to people, to the moment.

So whether you're a lifelong villager or new to the community, here's wishing you a Christmas full of warmth, laughter, and perhaps a snowflake or two (billion) over Didmarton.

Did You Know? – The Magic of Mistletoe

Long before it became a symbol of Christmas romance, mistletoe was sacred to the Celts and Norse people. It was thought to bring peace, protection, and good luck — even enemies who met beneath it were said to lay down their weapons.

The custom of kissing under the mistletoe began in England in the 18th century, when it was hung in doorways as a sign of friendship and goodwill. Tradition says you should pluck one



HELPING OUR CUSTOMERS GET
THE MOST FROM COUNTRY
LIVING FOR GENERATIONS



VISIT OUR COUNTRY STORE

Open to the public and trade
customers

Animal Feeds
Animal Bedding
Gardening Equipment
Country Clothing
Footwear



**AUTO
GLYM**

Levington

**SPEAR &
JACKSON**

AIGLE
DEPUIS 1853

EGO

1/12
EQUIPMENT

Hoggs of Fife
1888

SKINNER'S



T H WHITE
COUNTRY
STORE

Sherston Works
Knockdown
Tetbury Glos GL8 8QY
01454 238181
www.thwhite.co.uk

DYDDI PETS -Ottilie's pets

Hello I am ⁽⁵⁾ ~~Ottilie~~ I have
a pony he was a bit
cheeky. We have
two dogs they are
mossy and Crumpet.
mossy wants to run
around and Crumpet too
mossy licks her
me and Etta plate.
the pony groom
brush and Bertie
we love the dogs we
them all!

Hello, I am Ottilie (5). I have a pony. He was a bit cheeky. We have two dogs. They are Mossy and Crumpet. Mossy wants to run around and Crumpet too. Mossy licks her plate. Me and Etta (my sister) groom Bertie the pony and we brush the dogs. We love them all!

If your Child has a pet - be it big or small, please get them to contact the editor (address at the back of the Dyddi) Pictures welcomed. Budding writers encouraged. Thank you Ottilie, great letter.



Celebrate Christmas at The King's Arms

A Warm Welcome to Celebrate with Us this Festive Season

With roaring fires, twinkling decorations and a warm welcome, The King's Arms is the perfect place to relax and celebrate this festive season.

Whether you're looking us up for a celebratory lunch with colleagues, a family breakfast with Santa or an evening of festive food with friends, there's something for everyone this Christmas.



What's On at The King's Arms

Cheese and Wine Evening

6th December

Enjoy five hand-picked wines, each paired with local cheeses for a relaxed evening of great flavours and good company.

Breakfast With Santa

20th December 2025

A magical morning for little ones with breakfast, a gift and a visit from Father Christmas himself! £10 per child, 10am–12pm.

Christmas Festival Menu

1st–23rd December 2025

Celebrate the season with our festive two or three course menu, using from the finest local, seasonal ingredients.

Christmas Day Drinks

8am – 4pm 25th December

Join us for a festive tipple or two this Christmas Day. The fire will be glowing, glasses will be clinking and the atmosphere warm and festive.

Host Your Private Party

Exclusive Use

Host your own festive celebration in one of our private rooms — from canapés to cosy dinners, we'll make it special.

New Year's Eve

31st December 2025

Ring in 2026 with live music, a buffet and great company. Free entry, with buffet food available from £10.

Opening Hours

Monday–Thursday: 08:00–22:00

Friday–Saturday: 08:00–23:00

Sunday: 08:00–19:00

The King's Arms, The Street, Didmarton, Badminton GL9 1DT

01458 238245 | info@kingsarmsdidmarton.com | www.kingsarmsdidmarton.com

October 2025 Speed Watch Summary

Belows the summary from the October Speed Watch sessions.

Considering the time of year we were lucky to be able to do all 10 planned sessions with the car accident before the Thursday session being particularly challenging.

Saturday morning proved to be very worthwhile, possibly because we had different drivers passing through who may not have come across us before whereas drivers going to or from work in the week are more aware of our presence.

We are still getting far too many doing 40mph and above and with 2 recorded at 50mph it shows that we still have some useful work to do.

The Police mobile camera van was once again at St Lawrence's on the morning of Tuesday 4th November supporting our efforts.

Two new members have recently joined the team but we are always looking for new villagers to join so that we can maintain both the number of sessions that we do and some more weekend sessions, so please get in contact with me or none of the team.

Sue Hammond

October 2025 Summary

Day & Time	Site	Pos ID	Top Speed & Time	Total Vehs	Comments
Mon 27 8:15 to 8:45	Village Hall	6	44 mph at 08:36	212	Highest speeds recorded between 08:30 and 08:45
Mon 27 15:30 to 16:00	Village Hall	5	42 mph at 15:53	226	
Tues 28 08:30 to 09:00	St Lawrence	3	43 mph at 08:37	185	Also 41 mph at 08:47
Tues 28 16:15 to 15:45	Village Hall	5	39 mph at 16:25	209	
Wed 29 08:00 to 08:30	Village Hall	8	50 mph at 08:08	187	Also 40 mph at 08:14 and 49 mph at 08:30
Wed 29 15:45 to 16:15	St Lawrence	4	40 mph at 15:55	188	
Thurs 30 15:30 to 16:00	Village Hall	3	45 mph at 15:57	136	Accident at Didmarton House
Fri 31 08:00 to 08:30	St Lawrence	3	38 mph at 08:29	80	
Fri 31 15:00 15:30	Village Hall	9	44 mph at 15:16	179	Two others 43 mph at 15:19 and 43mph at 15:20
Sat 1/11 09:30 to 10:00	Village Hall	11	50 mph at 09:41	191	Five others at 40 mph+ throughout the session
Totals		57		1793	Overall, 57 vehicles at 35+ mph and of those 18 vehicles were at 40 mph+ (including 2 at 50mph)



CLASS 7 MOT now available

Find us at our new premises around the corner at Home Farm



ALL MAKES OF CARS, FOUR WHEEL DRIVES AND
LIGHT COMMERCIAL VEHICLES

- ✓ **MOT Testing Class 4 and now Class 7**
- ✓ **Vehicle Repairs**
- ✓ **Servicing**
- ✓ **Diagnostics**

Free loan cars
are available

Call us on 01454 238 700
or visit www.mottetbury.co.uk



HOME FARM, KNOCKDOWN, TETBURY GL8 8QY



Cuttings

Despite a no-show by our booked speaker last month, we enjoyed an improvised evening of gardening tips, questions and (mostly) answers, and a quiz. Thanks to members for their patience!

To round off 2025, we are welcoming back Julia Armstrong to demonstrate that Christmas wreaths and decorations are easy when you have artistic talent, imagination and the right materials! The evening will be accompanied by mulled wine, bubbles and festive treats. We hope you'll all come.

FUTURE SPEAKERS PROGRAMME - 2026

January 6th	Kate Holtom - Caring for houseplants.
February 3rd	Paul Fletcher - Creating the garden at Cherry Orchard Barn, Luckington.
March 3rd	Gill Hazel - Classic, rare and unusual bulbs.
April 7th	Bob Brown - Cotswold Garden Flowers: Plants that have recently grabbed my attention.
May 5th	Andrew Jeanes - Climbers.
June 2nd	Mary Keen - Diary of a keen gardener.
July 7th	Robert Champion - The Salvia Family.
August -	No Meeting in August
September 1st	Stephen Anderton - Christopher Lloyd and Great Dixter.
October 6th	Jane Moore - Late Summer Colour in the garden.
November 3rd	Duncan Coombs - Pruning shrubs and their aftercare.
December 1st	Badminton - A talk by the two Head Gardeners.
Trips:	Day trips to RHS shows and visits to various gardens are arranged throughout the year.

Meetings are held in the British School Room on the 1st Tuesday of each month.

Doors open at 7pm. Speaker starts at 7.30pm with refreshments/raffle afterwards - £2.00.

Contact: sherstongardeningclub@gmail.com

VALERIE'S WARTIME IN DIDMARTON.

In last month's edition we introduced Valerie Gallery, an evacuee child from London during the second world war who spent the years with her grandfather here in Didmarton.

We know a little more about her – but not much. It seems she was born to Ivy Shortt and Lawrence Borham (an artist) in about 1930 and eventually married John Gallery.

In 1982 Valerie received a legacy in the will of Lilian Millman and spent the later part of her life in Cornwall.

Next year we will serialise her monthly childhood memories of life for an evacuee child in Didmarton but meanwhile here is a brief outline of what was an 'evacuee' and why.



War time Evacuees.

When war broke out in September 1939, one of the government's most urgent fears was that Britain's towns and cities would be heavily bombed. To protect the youngest and most vulnerable, a vast operation—known simply as *evacuation*—was set in motion.

It became one of the largest population movements in British history and touched almost every village in the country.

Cities such as London, Bristol, Birmingham and Portsmouth were considered prime targets. The government expected heavy air raids and knew that children, mothers with babies, and the elderly would be at great risk. The plan was to move them to "reception areas" in the countryside—quiet, safer places far from industry or military sites.

For many children, the adventure began with a mixture of excitement and fear. Carrying a small suitcase, a gas mask, and often a brown-paper label tied to their coat, they boarded trains not knowing where they would end up. Teachers accompanied their classes, singing songs to steady nerves as steam trains pulled away from smoky city platforms.

VALERIE'S WARTIME IN DIDMARTON.

Villagers across the country gathered in school halls, churches, and village greens to meet the new arrivals. Families volunteered—sometimes eagerly, sometimes nervously—to take in evacuees. In many cases, the match was made on the spot: children stood in lines while hosts stepped forward to choose whom they could shelter.

Life in a rural village could feel like another world. Some children found themselves on farms, discovering horses, chickens, and open fields for the first time. Others helped dig vegetables for the war effort or learned to milk cows before school. Many formed deep, lifelong bonds with their host families.

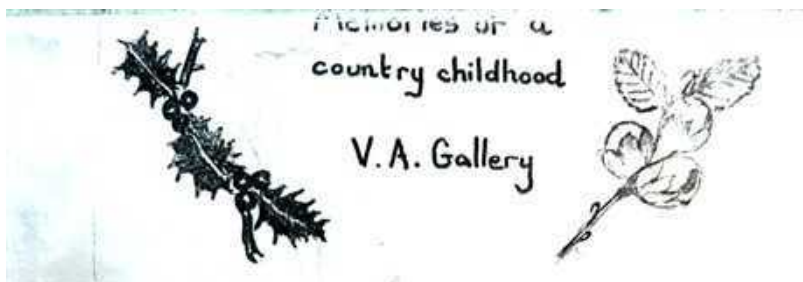
But evacuation was not always idyllic. Some evacuees struggled with homesickness or the challenge of fitting into a very different way of life. And not all placements were happy ones, though local billeting officers worked hard to sort out problems.

As the war progressed, some children returned home between raids; others stayed away for several years. By 1945, millions had taken part in evacuation schemes. When peace finally came, many children faced the strange experience of leaving their “second families” behind and returning to city streets that no longer felt familiar.

Today, the memories of evacuee children—now in their 80s and 90s—remain vivid: the kindness of strangers, the shock of separation, the countryside skies at night without blackout, and the sense of communities pulling together in extraordinary times.

Every village has its own tales of evacuees who arrived as frightened children and left as part of the community. Some returned later in life to visit the homes that sheltered them; a few even remained permanently, having forged bonds stronger than circumstance.

As we look back, evacuation stands as a reminder of the resilience of children, the generosity of rural communities, and the way ordinary people quietly shaped the war effort—not with uniforms or weapons, but with spare beds, hot meals, and open doors.





Your local Multi-Award winning Landscaping & Garden Design specialists

For a free estimate contact Chris Blackwell:

m: 07939 101520 t: 01453 835032

e: chris@goldenstones.co.uk www.goldenstonesgardening.co.uk

Try Tetbury Hardware First!!

We have been trading in Tetbury for over 13 years now supporting customers both locally and those visiting the area.

We hope that we have the range of products to help our clients overcome many day-to-day situations. We also delivery locally.

Pet Products: We can supply most leading brands of Foods for all animals as well as a wide range of Bedding, Toys, Leads etc. Try us first before you travel you may be surprised how competitive we can be.

Garden Care: Our range of garden products is extensive so give us a call.

We also stock Homewares, Electrical Items, Fuels, Cleaning and Decorating Products. We can also Cut Keys, Transfer Videos and Tapes as well as Shoe Repairs (weekly turn-around)

Tetbury Hardware 30a London Road Tetbury

01666500353

BODYMATTERS

I know I've written about Dementia before and we read about it in magazines, papers and adverts but I still think we need to remind ourselves of what can happen if we don't take responsibility and look after ourselves.

Dementia is an umbrella term which describes a range of symptoms that relate to cognitive decline and interference of daily life. Alzheimer's disease is the one we hear about a lot and is responsible for 60 - 80% of all cases. There is also Vascular Dementia, Lewy's body dementia and frontotemporal dementia which all have their own patterns and causes.

Alzheimer's is quite subtle where words are misplaced along with things such as keys and phones. Also feeling overwhelmed by easy events and tasks. Over time the disease progresses and affects mood and language and sadly ability to carry out day to day functions. I'm sure we can all think of someone who may sadly have this.

In Alzheimer's disease abnormal protein build - up affects cells in the hippocampus which is the area responsible for our memory and learning. This is why memory loss can be one of the earliest signs.

Most people develop Alzheimer's over 65 and women are at greater risk. This may also involve the drastic hormonal change (particularly oestrogen in the menopause). (It would seem that us women get a pretty bad deal i'm thinking). Genetics can play a role, people without a genetic predisposition have about a 13% lifetime risk but carrying one of the APOE4 gene increases that risk by around 30% and having two copies - one from each parent raises it to over 50%. These inherited risk genes don't guarantee the disease but they do raise susceptibility.

We can help ourselves, food and exercise being medicine in itself and we must remember this and have the self discipline to refuse the "dangerous" ultra processed foods and eat a rainbow of foods consisting of antioxidants rich plants which help kill the toxins in our bodies. Be consistent with Omega 3's to help reduce inflammation and support neurotransmission and help protect against mood disorders like depression.

Watch salt intake which can impact high blood pressure and vascular health. Limit alcohol which can increase inflammation and accelerate neurodegeneration. Low



Roxzanne@AllaboutSites

Web-design

AllAbout Sites—Keeping the Internet Simple

*I promise she will do a **VERY good job**—Jonty Evans Olympic Eventer*

info@allaboutsites.co.uk

07833 433337—Roxzanne Fox-Roberts

Wow since Roxzanne sorted my website traffic has increased and bookings are up, I would highly recommend her professional services, fantastic job!"

TV Problems? Poor Picture?

Call

**AARDVARK
INSTALLATIONS**



website: www.aardvarkinstallations.co.uk

**New TV Aerials - Freesat Installations - Extra TV Points
Set-up & Installation of equipment - TV wall mounting
CCTV Installations - WiFi improvements & Data
Networking
Domestic Electrician**



01666 734989 Email aardvark@alpens.co.uk

Roz Savage MP, South Cotswolds

Preparing for Winter

By Roz Savage MP, South Cotswolds

As winter approaches, nature rests and renews - and we too must prepare for seasonal challenges like flooding. From Purton to Poulton to Parliament, I'm working to strengthen local flood protection.

Earlier this month, I convened a Flooding Summit in Cirencester, bringing together councillors, parish leaders, and community groups to share knowledge and practical plans. The message was clear: local expertise and collaboration are key.

The Cotswold Volunteer Flood Warden Scheme - run by Gloucestershire Rural Community Council and Cotswold District Council - shows this spirit in action. Flood Wardens help monitor waterways, share information, and keep communities safe.

Find out more at www.cotswold.gov.uk/floodwardens or contact rachels@grcc.org.uk. Even small actions - checking on neighbours or reporting blocked drains - can make a big difference.

Winter brings shorter days, but also an opportunity for community warmth, kindness, and care for our shared landscape.

Warm wishes,

Roz

roz.savage.mp@parliament.uk

01285 300555

roz.savage.mp@parliament.uk



Parking on narrow roads

A local resident has asked for a note to be put in the Dyddi about double parking.

Please ensure you leave enough space when parking—especially if double parking—so fire engines (which are 2.6 metres wide) and refuse lorries can get through. Blocked access could delay emergency response or waste collection. This issue is particularly severe in Bertha's Field, where it can be difficult for even a car to squeeze past at times.



*We wish you a very
Merry Christmas*



THANKYOUFORYOUR CUSTOMIN2025
WELOOKFORWARD TOSEEINGYOU
AGAIN IN 2026

FROM MIKE & TEAM IND



info@indplumbingandheating.co.uk ~ 01666 503632 ~ www.indplumbingandheating.co.uk

**NOW ACCEPTING STUDENTS!
FIRST STEPS &
CARLY ELIZABETH
SCHOOL OF DANCE
HAWKESBURY - UPTON**

We welcome students of all ages and skill levels.
Pre-School/Baby Ballet - Advanced

**CLASSES AVAILABLE WITHIN
HAWKESBURY UPTON VILLAGE HALL GL19 1AU**

**I.S.T.D GRADES, VOCATIONAL & PROFESSIONAL DANCE
EXAMINATIONS**

IMPERIAL BALLET - MODERN - TAP - JAZZ - CONTEMPORARY

Competitions / Exams / Festivals / Shows

Email - carly_hall@hotmail.co.uk

Tel - 07540339511



The
GEORGE
Veterinary Hospital



Malmesbury

01666 823165

Book your appointment here - scan for availability



**Nailsworth
Tetbury**

**01453 705560
01666 503531**

Equine Vets

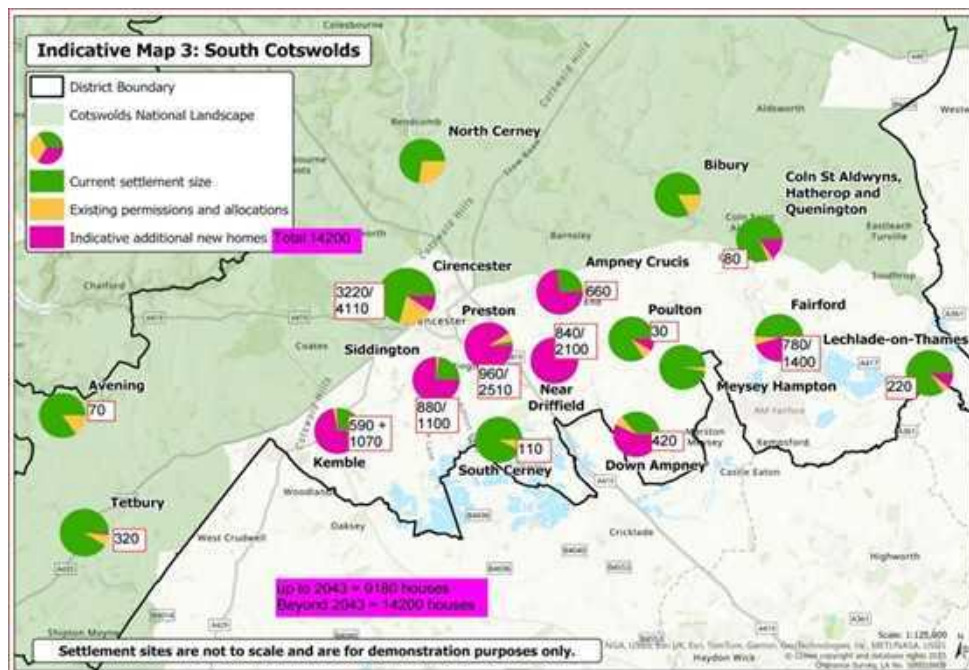
01666 826456

Farm Vets

01666 823035

COTSWOLD DISTRICT COUNCIL UPDATE

Cotswold District Council (CDC): The new Local Plan is arguably the most significant document in CDC's history. It attempts to make sense of the Labour Government's top-down target for housebuilding in the Cotswolds. In short, we are legally obliged to build in excess of 18000 houses in the next 10 years (we currently have around 42000 homes in the district), and many thousands more in the years following. 80% of the district is the highly protected Cotswold National Landscape, and taking out other unsuitable areas, these houses need to be built on 16% of what's left, and with many of these areas south of Cirencester we have to absorb over 9000 houses, with up to 14200 beyond 2043!



We obviously don't have the infrastructure to cater for this expansion (Cirencester hospital is actually REDUCING its services), and it will change the Cotswolds beyond recognition. It would also fail in the goal of making the Cotswolds more affordable, as the prices in protected areas would soar even higher! CDC is united in fighting the government against these targets, but we need your help.

The Local Plan will be out for consultation in a couple of weeks until early January, so please respond to it as individuals and Parish Councils – I will publicise the links to councils and on Facebook. **PLEASE HELP TO PROTECT THE COTSWOLDS!**

Councillor Tony Slater

Cotswold District Council, Representing Grumbolds Ash with Aveining.

email: Tony.slater@cotswold.gov.uk Tel: 07793669930



COTSWOLD
CAR CHARGE

DOMESTIC EV CHARGER INSTALLATIONS

Free no obligation quote

Tel: 01453 497044

Email: mark@cotswoldcarcharge.co.uk

www.cotswoldcarcharge.co.uk



Lucy Tom
INTERIORS

Sherston Soft Furnishing Studio
Noble Street, Sherston SN16 0NA

01666 841433

07813 877509

lucy@lucytom.com

- Projects undertaken in all areas of interior design and styling
- Curtains and blinds handmade by our experienced team
- Extensive library of fabric pattern books
- In-house modern and traditional upholstery
- Box seat and scatter cushions
- Visit our shop for homewares, gifts, greetings cards *and much more!*

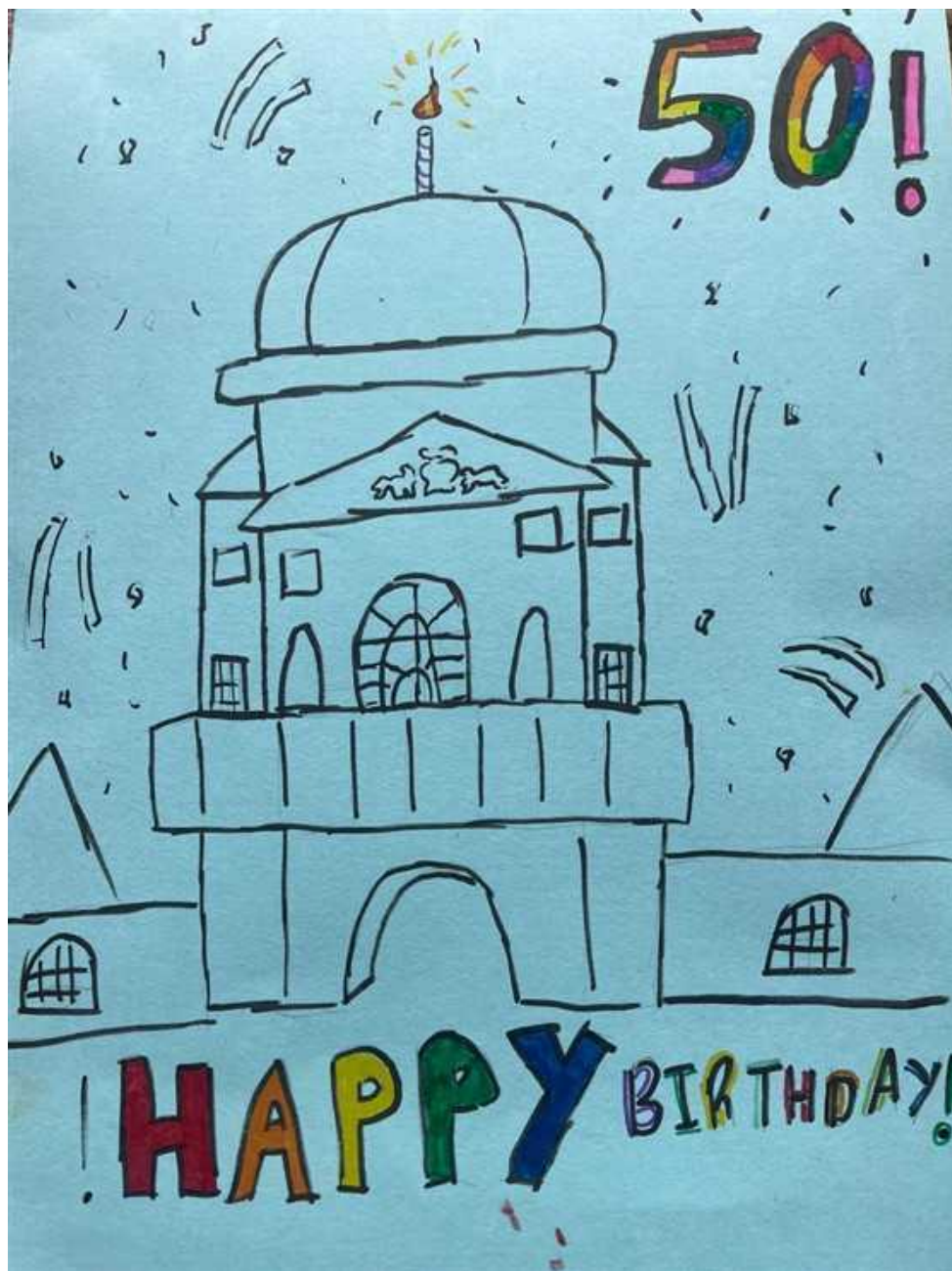


The on-site **Courtyard Café** serves
Espresso Coffee, Hot Chocolate,
Herbal Teas, Home-made Cakes,
Sandwiches and Toasties



Ask
us about
**INTERIOR
SHUTTERS**
from Shutter Frontier





DYDDI Winner : Ruby O'Bern aged 12 - Granddaughter to Helen Russel - Well done Ruby and thank you for your winning card.

**MATTHEWS
OF MALMESBURY**

Est 1880

**MATTHEWS
OF TETBURY**

Est 1880

INDEPENDENT FUNERAL DIRECTORS

Traditional funerals and woodland burials.

24 hours a day, 365 days a year.

Interest free pre-payment funeral plans available.

OUR FAMILY WILL CARE FOR YOUR FAMILY



Golden Charter
Funeral Plans

Malmesbury

01666 822216

7 BURNHAM ROAD, MALMESBURY
WILTSHIRE SN16 0BQ
WWW.MATTHEWSOFMALMESBURY.COM

Tetbury

01666 505199

23 MARKET PLACE, TETBURY
GLOUCESTERSHIRE GL8 8DD
WWW.MATTHEWSOFTETBURY.COM



Artisan Jack

Your local nose-to-tail butcher

Proper bacon, handmade burgers, award-winning sausages, local venison, pork, lamb, beef & chicken

Prepared and cut-to-order by Jack, an award-winning & traditionally-trained artisan butcher & curer with over 12 years' experience.

FREE contactless delivery within a 15-mile radius of Tetbury every FRIDAY min. £30 spend, £3 delivery charge on orders under £30. £4 Delivery charge applies on addresses over 15 miles & up to 30 miles max, no min. spend

email: butcher@artisanjack.uk to sign up to our weekly e-newsletter

Order by 9am TUESDAY for same FRIDAY delivery

All meat is fully free range & from high welfare farms & abattoirs

Our retail packaging is either 100% recyclable, biodegradable or compostable

F: ArtisanJackUK. I: #artisanjackuk



The
GEORGE
Equine Vets

E: horse@georgevetgroup.co.uk

01666 826456



01666 823165

E: petinfo@georgevetgroup.co.uk



The
GEORGE
Veterinary Hospital

Christmas Tree Recycling



In Partnership with Just Helping

Collections 10th -13th January

Registration Closes 6th January



Take the hassle out of disposing of your Christmas tree and have Longfield collect it for a voluntary donation. *

You will not only be helping reduce your carbon footprint but also supporting community hospice. Longfield Community Hospice at Home can offer Wellbeing, Counselling, Bereavement Support for individuals facing a life-limiting condition.



*After costs, over 80% of monies raised will go to Longfield Community Hospice, around 13% going to Just Helping charity and over 5% to other local charities.

just-helping.org.uk/register-tree

Registered Charity Number 298627



JUST HEATING LTD .CO.UK

Your Local Oil, Gas and LPG Central Heating Specialists

We are proud to employ a fantastic team of Gas Safe and OFTEC qualified engineers who are committed to providing great service.

Our reputation has been developed through hard work and reliability making us the number one choice.

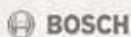
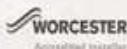
- Boiler Servicing and Repairs
- Boiler and oil tank replacements
- Hot water cylinders and radiators
- Free no obligation quotes
- Up to 12 years warranty
- 0% Finance



01249 309 309
info@justheatingltd.co.uk
www.justheatingltd.co.uk

2 The Old Dairy
Charlton Park Estate
Malmesbury, Wiltshire
SN16 9DG

*T&C's apply



Proud members of
Checkatrade.com
Where reputation matters

Just saying!

Our annual bonfire night was a great success , with people coming from far and wide. The weather was so mild and still, which made it a perfect evening.

I would like to thank all of the army of volunteers who worked so hard and made the evening run smoothly:- The mulled wine ladies, the bar, cakes, buns, tombola, bbq, car parking, and both gates. But the biggest thanks must go to the bonfire builder, David Russell and the 1066 Pyrotechnicians who, yet again, put on a magnificent display. Also, a big thanks to all of you who came and supported us.

Helen Russell



YOUR DYDDI

The Dyddi Digest has been delivered free of charge for 50 years—thanks to our wonderful community. Your support at village fundraising events, along with kind donations, helps us keep the magazine going. Our local advertisers also play a big part in covering costs, and we keep advertising to a balanced level with a focus on supporting nearby businesses.

We love receiving articles for the Digest. Please send your piece by the 13th of the month. Around 250 words is ideal. If you're including illustrations, please allow space for them by reducing the word count. Our editorial team may gently edit submissions for clarity, length, and house style.

DONATE TO THE DYDDI

Please follow the link to donate to our village magazine.

Scan to Pay

Download SumUp Pay to earn cashback on every purchase.



ADVERTISE IN THE DYDDI

Quarter Page £125 for 12 issues

Half Page £195 for 12 issues

Full Page £375 for 12 issues

Shorter runs available, please contact the editor for a media pack.

Email: editor@dyddi.co.uk



DECEMBER HIGHLIGHTS AT THE GOODS SHED



- December 6/7** **Christmas Craft fair:** Stock up on Christmas gifts for the whole family and enjoy festive music and delicious treats. 10-4 Admission free.
- December 13** **Dickens' A Christmas Carol:** Happy Valley actor Vincent Franklin brings Dickens seasonal story to life in an amazing one-man show which will leave your blood chilled and heart warmed. Tickets in Advance £15, family of 4 £45. 7.30.
- December 18** **Film- The Nutcracker:** Ukraine's National Opera Ballet Company bring us this sumptuous staging of Tchaikovsky's perennial Christmas favourite. Tickets in advanced £7.50. 7pm
- December 19** **Community Carol Concert:** Traditional carols and modern with the added attraction of mulled wine and mince pies. Admission free. 6pm
- December 20** **Abba Fever:** Take a chance on a great pre-Christmas sing-along with family and friends. Abba Fever are known for great musicianship, choreography and authentic costumes. Tickets 27.50 in advance. 7.30
- January 2** **Wonder Pantomimes Robin Hood:** Join in as Robin and his Merry Men take on the evil Sheriff of Nottingham in this family-friendly event for all ages. Tickets in advance £13.48 adults, £9.70 child, family of 4 £37.73. 2pm and 5.30

For more details of our other events including film, talks, exhibitions, and afternoon tea concerts and to book tickets visit our website:

www.tetburygoodsshed.co.uk

SUDOKU

December Sudoku

Neil Fozard

For the uninitiated: to solve the puzzle, each row, column and 3x3 box must contain each of the numbers 1 to 9.

EASY !!

	5	6						
		4	1				6	
1					8			
			4			5		
2	8	9						
	4	3			1		9	
			9	5			2	3
9			2	4				8
6	3			1		9		

NOT SO EASY !!

5			9		6	4		
	1	4	2		5		3	
			7			8	4	
	6							
8		7	3		9	5	2	
9			5			2		
				3		7		
		5	1				8	

Answers to the November quizzes:

‘Easy’

7	2	3	8	6	1	4	9	5
5	8	9	4	2	3	1	6	7
6	4	1	5	9	7	2	8	3
4	5	2	9	1	8	3	7	6
9	3	6	7	4	2	8	5	1
1	7	8	3	5	6	9	4	2
8	1	4	2	7	5	6	3	9
3	6	5	1	8	9	7	2	4
2	9	7	6	3	4	5	1	8

‘Not so Easy’

3	5	4	7	2	8	9	1	6
1	2	9	3	6	4	5	7	8
8	6	7	9	1	5	3	4	2
5	4	1	2	3	7	8	6	9
9	3	2	8	4	6	7	5	1
6	7	8	1	5	9	4	2	3
2	8	3	4	7	1	6	9	5
4	9	6	5	8	2	1	3	7
7	1	5	6	9	3	2	8	4

Dec-25 Parish Church services:				
Date	Time	Parish	Service	Minister
7th December	9.30am	Lasborough	Holy Communion BCP	Rev P Cheeseman
2nd Sunday in Advent	1000am	Hawkesbury	Morning Prayer	Rev R Thomson
	3pm	Acton Turville	Advent Service of Light	Rev R Thomson
	6pm	Didmarton	Carol service	Rev R Thomson
14th December	9.30am	Lasborough	Matins	Lay led
3rd Sunday in Advent	1115am	Little Badminton	Matins	Rev R Thomson
	5pm	Hawkesbury	Sung Eucharist	Rev R Thomson
Thursday 18th Dec	6.30pm	Leigherton	Carol service	Rev R Thomson
21st December	9am	Didmarton	Holy Communion BCP	Rev R Thomson
4th Sunday in Advent	1115am	Sopworth	Matins	Rev R Thomson
	6pm	Acton Turville	Carol service	Rev R Thomson
	5pm	Hawkesbury	Carol service	Rev P Setterfield
	6pm	Westonbirt	Community Carol service	Rev P Cheeseman
24th December	4:00 PM	Hawkesbury	Christmas Crib service	Rev R Thomson
Christmas Eve	4.30 pm	Acton Turville	Nativity Service	Lay led
	6pm	Sopworth	Carol service	Rev R Thomson
	6pm	Lasborough	Carol service	Rev S Abbott
	1130pm	Didmarton	Midnight Mass	Rev R Thomson
25th December	9.30am	Lasborough	Holy Communion	Rev R Thomson
Christmas Day	11am	Great Badminton	Christmas service, (plus optional HC)	Rev R Thomson
28th December	9.30am	Lasborough	Holy Communion BCP	Rev R Thomson
Holy Innocents				

Readings: www.badmintonbenefice.com

Jan-26 Parish Church services:				
Date	Time	Parish	Service	Minister
4th January	9.30am	Lasborough	Matins	Lay led
The Epiphany	1000am	Hawkesbury	Morning Prayer	Rev R Thomson
	1115am	Didmarton	Matins	Rev R Thomson
	3pm	Acton Turville	Evening Prayer with HC	Rev R Thomson
11th January	9.30am	Lasborough	Holy Communion BCP	Rev P Cheeseman
The Baptism of Christ	9.30pm	Leigherton	Holy Communion BCP	Rev R Thomson
	1115	L Badminton	Matins	Rev R Thomson
	5pm	Hawkesbury	Choral Eucharist	Rev R Thomson
18th January	9am	Didmarton	Holy Communion BCP	Rev R Thomson
2nd Sunday of Epiphany	10.00am	Hawkesbury	Family service	Rev R Thomson, Debbie Young-Talk
	1115am	Sopworth	Matins	Rev R Thomson
	3pm	Acton Turville	Evening Prayer	M Butler
25th January	9.30am	Lasborough	Holy Communion CW	Rev J Hunnisett
Conversion of Paul	1115	L Badminton	Matins	Rev J Hunnisett
	5pm	Hawkesbury	Evensong	Sir Ian MacFadyen

VICAR'S LETTER

Dear Friends,

Last month I wrote about having faith in God, or in a Holy Presence or Spirit. Many people I speak to seem to believe there is some Spirit 'up there', which is unknowable and far removed from them.

One of the most contentious things that Jesus said, was that we could call God 'Abba' which means Father, or more intimately even, 'Daddy'. Because sometimes the religious leaders made out that God was very distant from the everyday person. And that you had to do certain things in order to enter His Presence. No - We can call God, Daddy! He is that close to us.

He also said: "I no longer call you servants, because a servant does not know his master's business. Instead, I have called you **friends**". So, it always strikes me as sad, when a person tells me that they do not think they can speak to this Higher Being. As if they are not good enough, or that God is not interested in them.

Paradoxically, it is the sin of pride – to think that we are so dreadful that God would not be interested in us. Really - are you that bad? Wow!

God is not stupid. He knows what is going on in our hearts. And I do not think he cares about our excuses. But he does care about us being blind and missing out the wonderful gift of a relationship with Him.

So this Christmas, perhaps we can all put our excuses behind us, and find a way to approach him and offer our gifts of gratitude for all that He gives us, especially the gift of His Son, Jesus - born in Bethlehem. I heartily recommend it.

With my best wishes for a happy and festive Christmas,

Rev Richard Thomson, (vicar)





LET THE MAGIC BEGIN

MAGIC SHOW

DEC 17th 2025

Wednesday Dec 17th, 7.30pm, Badminton Village Hall
Mind Reading, Impossible illusions and draw dropping magic
Hosted by Magic Circle magician Jack Thomson
To book tickets email: rebecca_lindsay@hotmail.com or click
here for details



CHRISTMAS SERVICES AT ST. LAWRENCE'S

All are welcome

CAROLS BY CANDLELIGHT



Sunday 7th December 2025 at 6.00pm

With drinks and mince pies after the service

MIDNIGHT MASS



Wednesday 24th December at 11.30pm

Last chance to book for our Festive Menu & Christmas Day!

**The Festive Menu is available Wednesday to Saturday
throughout December**

To book please phone or email on 01666890250 or
info@theroyalokleighterton.co.uk

Christmas Opening Hours

Date	Pub	Food
22/12	12pm - 11pm	12pm - 3pm 6pm - 9pm
23/12	12pm - 11pm	12pm - 3pm 6pm - 9pm
24/12	12pm - 11pm	12pm - 9pm
25/12	12pm - 3pm	Pre-bookings Only
26/12	12pm - 8pm	12pm - 6pm
27/12	12pm - 11pm	12pm - 9pm
28/12	12pm - 8pm	12pm - 6pm
29/12	12pm - 11pm	12pm - 3pm 6pm - 9pm
30/12	12pm - 11pm	12pm - 3pm 6pm - 9pm
31/12	12pm - 10pm	12pm - 8pm
01/01	12pm - 8pm	12pm - 6pm
02/01	Normal Hours Resume	Normal Hours Resume

